



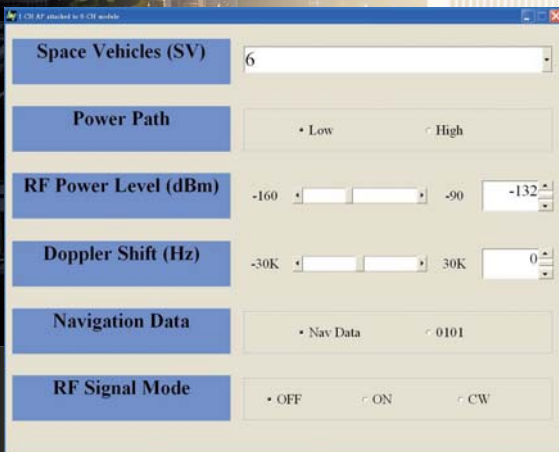
GPS

simulators from ADIVIC are sophisticated engineering tools designed to support GPS receiver navigation system research, development, integration and production test. We are committed to building proven, leading-edge products to support testing and integration of Global Navigation Satellite Systems.

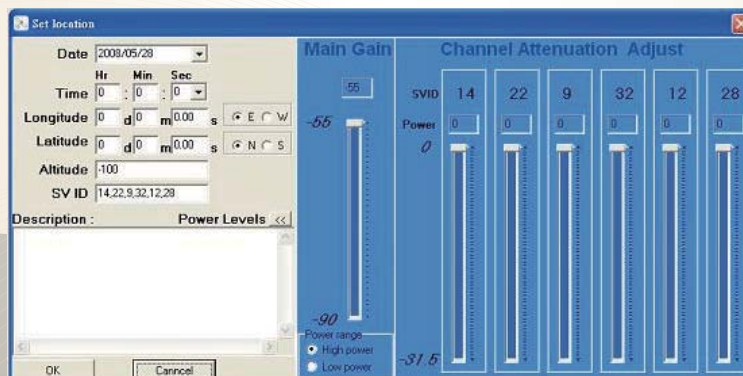
ADIVIC MP6220 GPS simulator is design for various GPS receiver testing purpose. In multi-channel mode, user can test GPS receiver : position fix sensitivity, signal tracking sensitivity, TTFF(time to first fix) , position deviation, and position accuracy. In single channel mode, user can test sensitivity, S/N ratio, and production line ATE test. To provide the usage flexibility, the MP6220 GPS simulator enables the users to switch between the single-channel and multi-channel modes.

Single Channel Features

- ◆ 1 channel GPS L1 C/A code
- ◆ Doppler control 30KHz to -30KHz in 1Hz step
- ◆ Almanac data upgradeable
- ◆ Sensitivity testing
- ◆ Built-in ultra high precision OCXO
- ◆ RF Level from -65dBm to -120dBm in 1dB step
- ◆ RS232 interface control



6-Channel Option



- 6 Channel GPS
- Time
- Log / Lat
- Number of SV
- Each SV power level
- Main Power level



specifications

Frequency Characteristics

- Frequency Range : 1575.42MHz
- Warm-up time (typical) : 30 minutes
- Frequency Accuracy : +/-100ppb maximum
- Temperature stability : +/-100ppb maximum
- Aging (Per year) : +/-100ppb maximum
(Per Day) : +/-1 ppb maximum

Channels

- Number : 1CH, 6CH
- Navigation data : GPS C/A @1.023MHz with 50bps
- Modulation : BPSK

Spectral purity

- Phase Noise@1KHz offset : <-80dBc/Hz
- Harmonic : <-70dBc

RF Output Characteristics

- -65dBm ~ -120dBm in 1dB step
- Amplitude Resolution : 1dB step
- Amplitude Accuracy : <+/-1dB
- Output Impedance : 50 ohms

- Doppler Shift : ±30KHz (1CH option)

Option A : AMP module

- High power normal output level : -55dBm ~ -90dBm
- Low power normal output level : -90dBm ~ -145dBm
- Channel Attenuation range
(refer normal output level : -31.5dB ~ 0dB)

Voltage Standing Wave Ratio

- 1575.42MHz : <1.2

Overload protection on RF output

- Maximum reverse RF power : 1W maximum
- Maximum DC input : +/-50 VDC

Calibration

- Calibration : 1 year

Environmental

- Operating temperature 0 to 50 °C
- Relative Humidity : 10% to 90%
- Storage temperature : -20 to 70 °C
- Relative Humidity : 5% to 95%



Model

Description

USD

GPS Single Channel emulator

- Frequency 1575.42MHz
- 65dBm to -120dBm
- OCXO
- RS232 control(USB)
- Single Channel
- 1-32 SV selectable
- Doppler 30KHz

call us

Op1 : 6 Channel SW/FW

- 6 Channel
- World location profile editor
- 60 mins profile

call us

OpA : AMP module

- -55dBm to -160dBm

call us

