

PROPRIETARY NOTICE: This document contains proprietary information of AT Inc. neither the document nor said proprietary information shall be published, reproduced, copied, disseminated or used for any purpose other than consideration of this document without the express written permission of a duly authorized representative of said Company.

REVISIONS				
LTR	DESCRIPTION	EFFECTIVITY	DATE	APPD
C	SEE ECO	ECO #2696	05/05/98	

SPECIFICATION:

FREQUENCY: 1565-1585 MHz + GLOPASS
 POLARIZATION: RIGHT HAND CIRCULAR
 AXIAL RATIO: 3 dB MAX
 RADIATION COVERAGE:
 4.0 dBIC: $\theta' = 0^\circ$
 -1.0 dBIC: $0^\circ \leq \theta < 75^\circ$
 -2.5 dBIC: $75^\circ \leq \theta < 80^\circ$
 -4.5 dBIC: $80^\circ \leq \theta < 85^\circ$
 -7.5 dBIC: $\theta = 90^\circ$

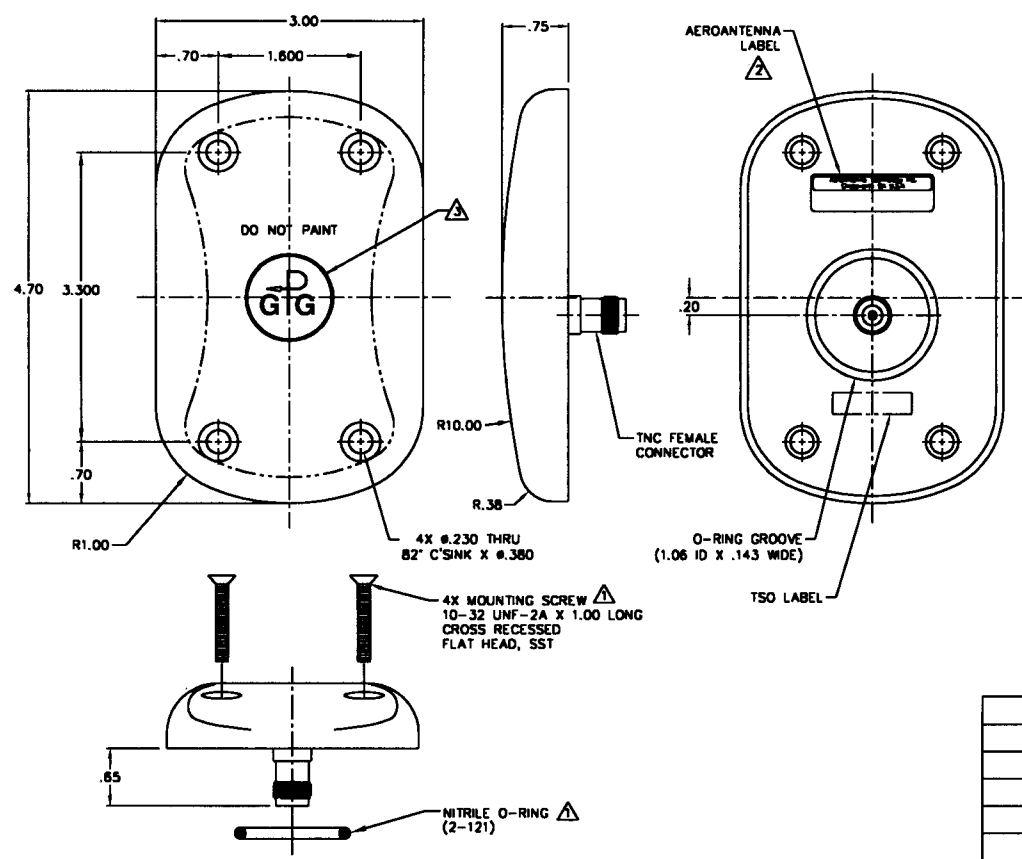
AMPLIFIER:
 NOISE FIGURE: 2.5 dB MAX
 IMPEDANCE: 50 OHMS
 VSWR: $\leq 2.0:1$
 BAND REJECTION: 20 dB @ 250 MHz
 POWER HANDLING: 1 WATT
 FINISH: POLYURETHANE ENAMEL, FLUID RESISTANT
 WEIGHT: 8 OZ MAX
 ALTITUDE: 55,000'
 OPERATING TEMP: -55°C TO +85°C
 DESIGNED TO: DO-160C
 ENV CAT: F2-AB[CLY]XSFDFKXXXXXAM[2A]C
 ARINC 743 FOOTPRINT
 TSO: C-129



Grube 39a
 82377 Penzberg
 Germany
 Tel.: +49 (8856) 80 30 980
 Fax: +49 (8856) 80 30 988
 Email: info@ppmgmbh.com
 Web: www.ppmgmbh.com

NOTES: UNLESS OTHERWISE SPECIFIED.

- 1 O-RING AND MOUNTING SCREWS SUPPLIED BY AEROANTENNA.
- 2 LABEL SIZE, SHAPE AND CONTENTS SUBJECT TO CHANGE WITHOUT NOTICE.
- 3 LOGO OPTIONAL.
- 4. TOLERANCES: .XX ± .03
 .XXX ± .010



PART NO. DESIGNATION:

AT1675-0X-XXXX-XXX-XX-XX-XX

COLOR
 W = WHITE
 S = SMOKE GRAY
 O = OLIVE DRAB

CONNECTOR
 * TNCM = TNC MALE
 * TNCF = TNC FEMALE
 * BNCM = BNC MALE
 * BNCF = BNC FEMALE
 * MCXM = MCX MALE
 * MCFX = MCX FEMALE
 * SMAF = SMA MALE
 * SMAF = SMA FEMALE
 * NTPM = N TYPE MALE
 * NTPF = N TYPE FEMALE
 * OOOO = NO TERMINATION

CABLE LENGTH
 * OOO = IN INCHES

MAGNET
 NM = NO MAGNET
 * IM = INTERNAL
 * RM = REMOVABLE
 * HD = HEAVY DUTY

GAIN (± 2 dB)
 OO = PASSIVE
 12 = 12 dB (28 mA)
 26 = 26 dB (85 mA)
 36 = 36 dB (100 mA)
 XX = OTHER

VOLTAGE
 RG = 4.5 TO 18.0 VDC

* = OPTION NOT AVAILABLE WITH THIS MODEL
 STANDARD MODEL = AT1675-0W-TNCF-000-RG-26-NM

CODE IDENT	PART OR IDENTIFYING NO.	NOMENCLATURE OR DESCRIPTION	MATERIAL/SPECIFICATION	ITEM NO.
LIST OF MATERIALS				
DRY REQ.				
DRAWN BY	E. GALBAN	12/20/98		
CHECK	UNG XI AN	03/09/99		
PROJ ENGR	S. VALDES	03/09/99		
D.A.	B. RUBENI	03/09/99		
APPROVAL	G. SHACHAR	03/09/99	TITLE GPS GLONASS ANTENNA	
UNLESS OTHERWISE SPECIFIED				
DO NOT SCALE DRAWING TOLERANCES DIMENSIONS ARE IN INCHES ANGLES ± 1/2°				
NEXT ASSY	USED ON	INDICATES SURFACE ROUGHNESS PER MIL-STD-10	SCALE NONE	AT1675-0C
			SIZE B	CAGE CODE OUVG2
			DRAWING NO. AT1675-0	REV C
			SHEET 1 OF 1	